



FLYWAY FORESTS

REFORESTATION PROGRAM

Restoring bottomland hardwood forests on private land in the lower Mississippi Alluvial Valley (MAV) to capture carbon, enhance water quality and protect wildlife.



Today, **over 75%** of the Mississippi River Valley has been deforested primarily by agricultural expansion.

PROTECTING PRIVATE LANDS

Through the Flyway Forests Program, Ducks Unlimited will work with landowners to design reforestation projects to balance desirable forest conditions for wildlife with the need to produce marketable carbon offsets to cover project costs.

HOW IT WORKS:

- DU will work with private landowners to design reforestation projects.
- Landowners enrolled in a permanent conservation easement will receive \$250/acre in the first year, with a 7% annual increase over ten years.
- Landowners enrolled in a 40-year term agreement will receive \$200/acre for the first year, with a 7% annual increase over ten years.
- A perpetual DU conservation easement will protect the acres enrolled in the program.
- The landowner will retain ownership of the land while DU covers all site prep, tree planting and survival monitoring of seedlings (*will replant as needed*).
- DU will monitor and conduct adaptive management for the first seven years.
- DU will continue to monitor and conduct field verification every five years (*after the first seven*) for the duration of the program (*40 years*).

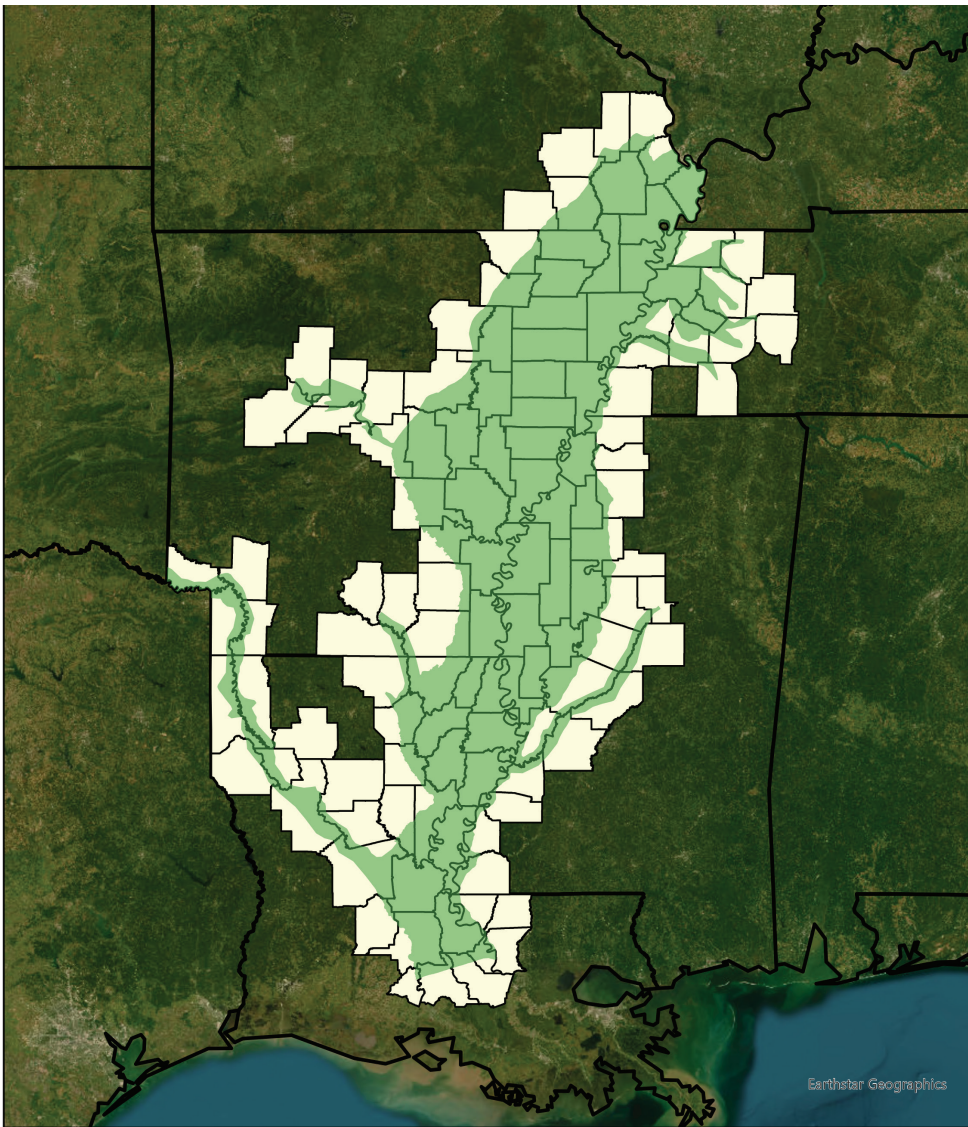
REFORESTATION BENEFITS TO WILDLIFE

- Supports habitat for ducks, deer, turkeys, black bears, squirrels and neotropical songbirds
- Provides breeding habitat for cavity-nesting waterfowl
- 50% of the trees planted on site are oaks which provide acorns—an important food source for waterfowl and wildlife

REFORESTATION ECO-BENEFITS

- Improve air quality
- Preserve soil health
- Provide oxygen
- Benefit the climate
- Replant native species of hardwood trees
- One acre of restored forest is equivalent to taking one car off the road for an entire year





MAV Priority
 Eligible Counties/Parishes

**Flyway Forests
Mississippi Alluvial Valley
Program Extent**



For more information about the
 Flyway Forests program, contact:
LAUREN ALLEMAN, Carbon Specialist
lalleman@ducks.org



2.6 MILLION trees
to be planted by 2028



855,000+ TONNES
carbon dioxide (CO₂e)
removed from the
atmosphere



12 NATIVE SPECIES
to be planted

WHO IS ELIGIBLE?

- Landowners in Arkansas, Louisiana and Mississippi along the Mississippi Alluvial Valley
- 75+ acres of land available
- Lands where bottomland hardwood forests historically occurred
- Fields in current or recent agriculture production
- Lands not currently enrolled in a conservation easement program

ENROLL TODAY

