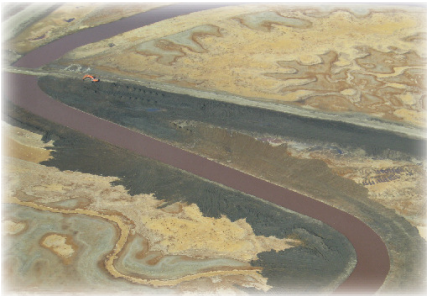


RELEVANT EXPERIENCE

Napa Plant Site - North Tidal Restoration



The main commercial salt processing plant in the North Bay was built along the Napa River during the 1950s on lands that were productive tidal marshes. The southern portion of the plant site still retains limited commercial salt harvesting, processing, and shipping facilities associated with the crystallizer and concentrating ponds, while on the northern portion the former marshes are being restored.



The Plant Site is now part of the Department of Fish and Game's Napa-Sonoma Marshes Wildlife Area. The Plant Site project is the second phase of the larger Napa River Salt Marsh Restoration Project. The goal of this phase is the restoration of tidal wetlands and associated transitional habitats on approximately 380 acres of the northern portion of the Napa Plant Site. The project is restoring tidal hydrology by lowering perimeter levees along the Napa River and Fagan Slough, breaching levees at strategic locations in the barge channel and along Fagan Slough, creating excavated interior channels, and lowering internal levees. In addition, levees along adjacent properties and the Northwest Pacific Railroad have been raised and improved to provide flood protection and valuable transitional ecotone habitat.



The Napa Plant Site Restoration Project is a collaborative effort between the California Department of Fish and Game, the Wildlife Conservation Board, and Ducks Unlimited. Project funding totals over \$7,910,000.

DUCKS UNLIMITED SERVICES PROVIDED:

- Development of final engineering drawings
- Environmental permitting and compliance
- Development of technical specifications
- Bid preparation and solicitation
- Project staking and layout
- Contract and construction management
- Water quality monitoring
- Project funding acquisition
- Project delivery and implementation